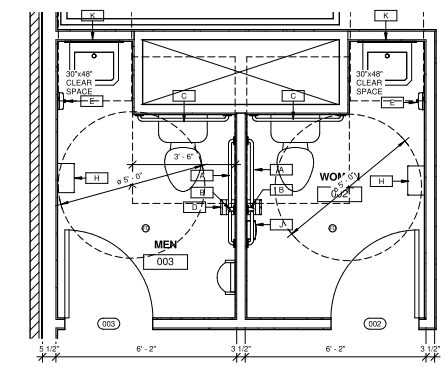


### GENERAL NOTES

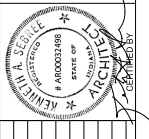
- GENERAL CONTRACTOR SHALL VERIFY ALL DIMENSIONS.
- ALL DIMENSIONS ARE GIVEN FROM STUD TO STUD, UNLESS OTHERWISE NOTED. STUD DIMENSION IS 3 1/2" OR 5 1/2".
- GENERAL CONTRACTOR SHALL COORDINATE WITH MECHANICAL CONTRACTOR, PLUMBING CONTRACTOR AND ELECTRICAL CONTRACTOR FOR ALL RESPECTIVE OPENINGS, AS REQUIRED. FOR MATERIAL FINISHES, REFER TO ROOM FINISH SCHEDULE ON THIS SHEET.
- ALL RATED FIREWALLS SHALL BE AN APPROVED UL ASSEMBLY.
- ALL DOOR AND WINDOW HEADERS SHALL BE (2 OR 3) 2X10'S WITH 1/2" PLYWOOD SPACER, OR AS NOTED.
- CONTRACTOR TO PROVIDE APPROVED SOIL TREATMENT FOR TERMITE PROTECTION.
- ALL STUD WALLS ARE 2X4'S OR 2X6'S AT 16" O.C. UNLESS NOTED OTHERWISE.
- CONTRACTOR TO PROVIDE AIR SEALING AT ALL INTERIOR AND EXTERIOR WALLS (TOP AND SILL PLATES) FOR MATERIAL FINISHES, REFER TO ROOM FINISH SCHEDULE ON THIS SHEET.
- ALL CEILING DRYWALL TO BE SMOOTH AND PAINTED.
- ALL MATERIALS AND WORK SHALL BE FURNISHED AND COMPLETED IN STRICT ACCORDANCE WITH ALL PREVAILING LOCAL, STATE AND NATIONAL BUILDING CODES.
- STANDARD IN ALL UNITS CABINETS AND VANITIES SHALL HAVE PULLS ON DOORS AND DRAWERS.
- PROVIDE STEEL ANGLE IRON LINTELS IN ALL LOCATIONS WHERE MASONRY VENEER PASSES ABOVE DOORS & WINDOWS.
- GENERAL NOTES PERTAIN TO ALL DRAWINGS.
- COORDINATE ALL WALL OPENINGS REQUIRED FOR MECHANICAL, ELECTRICAL, AND PLUMBING PENETRATIONS. VERIFY OPENING SIZES WITH APPROPRIATE CONTRACTOR.
- PROVIDE ALL FLOOR PREP AND LEVELING TO INSTALL NEW FINISH FLOOR MATERIALS.
- NEW INTERIOR PAINTED SURFACES SHOULD RECEIVE ONE PRIME COAT AND TWO FINISH COATS OF STAIN LATEX PAINT. REPAINTED AREAS SHOULD BE SPOT PRIMED AND RECEIVE 3 FINISH COATS.
- CONTRACTOR TO VERIFY AND COORDINATE ALL APPLICABLE DIMENSIONS OF FIXTURES AND EQUIPMENT SUPPLIED AND/OR INSTALLED BY OWNER.

RESTROOM ACCESSORY SCHEDULE			
NO.	DESCRIPTION	MANUFACTURER	MODEL NUMBER
A	42" STRAIGHT GRAB BAR	BOBRICK	B-5806x42
B	18" STRAIGHT GRAB BAR	BOBRICK	B-6806x18
C	36" STRAIGHT GRAB BAR	BOBRICK	B-5806x36
D	SURFACE MOUNTED MULTI-ROLL TOILET TISSUE DISPENSER	BOBRICK	B-2888
E	SURFACE MOUNTED SOAP DISPENSER	BOBRICK	B-4112
H	XLERATOR Hand Dryer	Excel Dryer	Wall Guard White
J	SURFACE MOUNTED SANITARY NAPKIN DISPOSAL	BOBRICK	B-270
K	24"x36" MIRROR	BOBRICK	B-165 2436



**SEBREE Architects, Inc.**  
 97 Dover Street, Suite 400, Avon, Indiana 46123-7556  
 Phone (317) 272-7800 E-Mail: sebree@sebreearchitects.com  
 Fax: (317) 272-7608 Web Site: http://www.sebreearchitects.com

### PROPOSED COMMERCIAL DEVELOPMENT - PHASE 1



NO.	DATE	BY	DESCRIPTION
1	03/27/2018	ELB	Owner Request Changes
2	04/23/18	ELB	Site Review Comments

DRAWN BY: ELB  
 CHECKED BY: KAS  
 NUMBER OF SHEETS: As indicated  
 TOTAL SHEETS: 1:1  
 FILE NAME: